

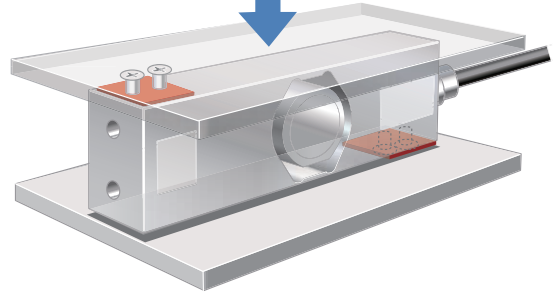
PW15AH

SINGLE POINT TYPE LOAD CELL



IP68

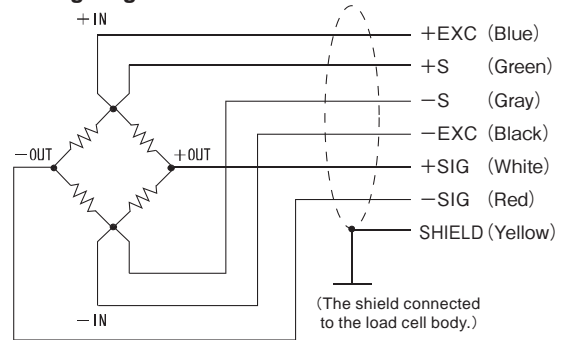
Application Example



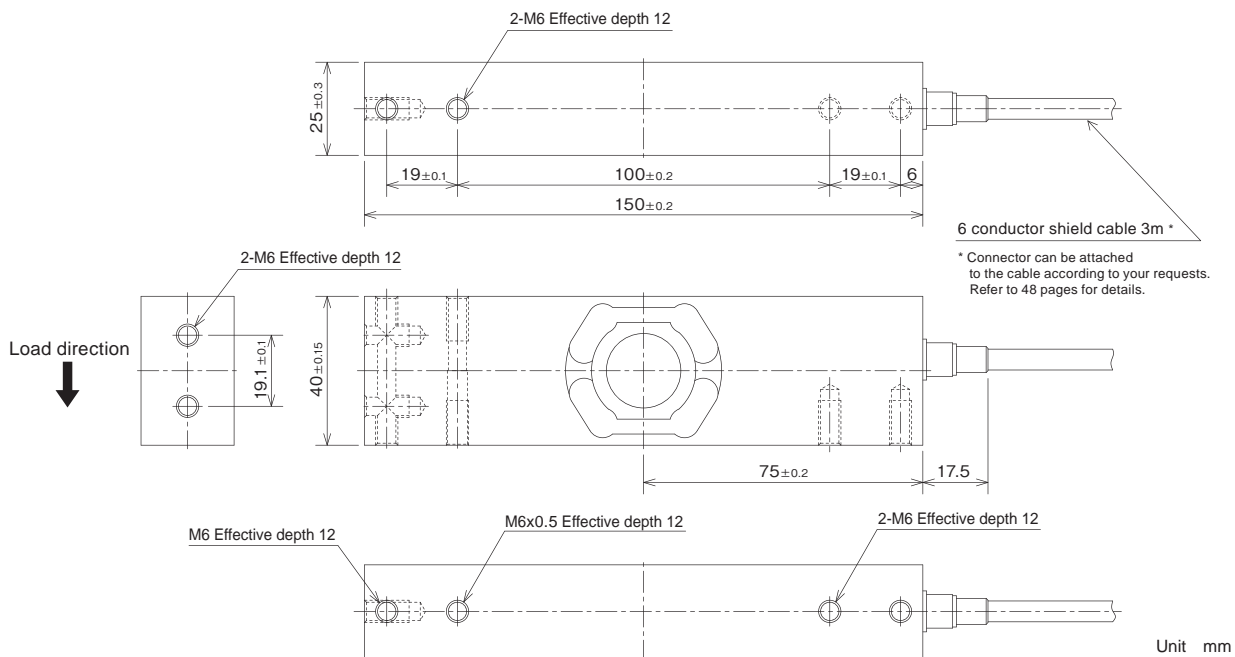
Specifications

Model	PW15AH-10KG, PW15AH-20KG, PW15AH-50KG, PW15AH-100KG	
Rated capacity	10, 20, 50, 100	kg
Rated output	2.0±0.2	mV/V
Safe overload	150	%R.C.
Maximum safe overload	300	%R.C.
Maximum safe side overload	300	%R.C.
Zero balance	0 ± 0.1	mV/V
Non-linearity	0.0166 (typ)	%R.O.
Hysteresis	0.0166 (typ)	%R.O.
Compensated temperature range	-10 to +40	°C
Safe temperature range	-10 to +50	°C
Temperature effect on zero	0.0140	%R.O./10K
Temperature effect on span	0.0175 (+20 to +40°C), 0.0117 (-10 to +20°C)	%R.O./10K
Input resistance	300 to 500	
Output resistance	300 to 500	
Recommended excitation voltage	1 to 12	V
Insulation resistance	1000 or more	M
Degrees of protection	IP68	
Cable	6 conductor shield cable 3m	
Load cell material	Stainless steel	

Wiring Diagram



External dimension



Model	Deflection at rated	Natural frequency	Maximum off center distance	Maximum platform size	Weight
PW15AH-10KG	0.5mm or less	169Hz	160mm	500x400mm	1.0kg
PW15AH-20KG		232Hz			
PW15AH-50KG		352Hz			
PW15AH-100KG		492Hz			