

F701-C

BASIC TYPE ACCUMULATION VALUE DISPLAY WEIGHING INDICATOR



DIN 144×72 CC-Link

- The basic type of weighing indicator.
- High speed A/D conversion and powerful digital processing capabilities of 200 times/sec., for rapid response to input signal.
- To serve its purpose, the operation has been made simple.
- High resolution of 1/10000 in all input range.
- DIN-size 144 × 72 for easy installation

18 digits sub display

Displays weighing data such as accumulation value as well as various setting values.

Display mode can be selected from 6 types of modes.

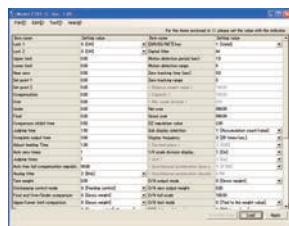


(Example) Accumulation times & accumulation value

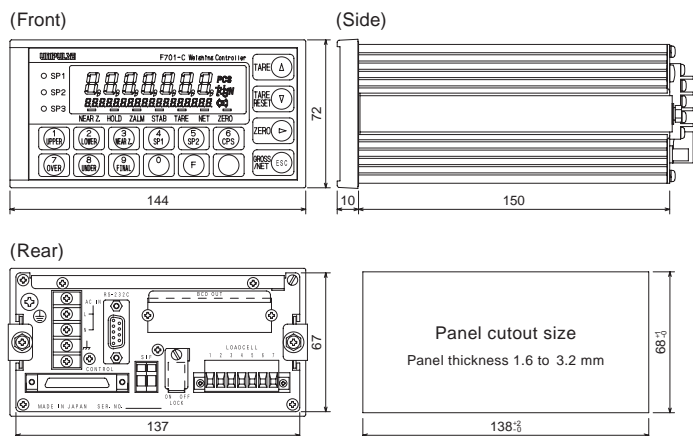
- Standard built-in of RS-232C.
- Allows one option to be selected from either CC-Link, BCD output, RS-485 or D/A converter

Exclusive PC application for setup

With RS-232C interface that allow you to read, write, save and retrieve parameter settings with a PC.



External dimension



Unit: mm

Specification

Analog	Excitation voltage	DC10 V±5% Output current: Within 120 mA Remote sense type (Up to 4 350 load cells can be connected in parallel.)
	Zero adjustment range	0 to 2 mV/V Rough adjustment: Digitally controlled by rough adjustment circuit Fine adjustment: Automatic adjustment by digital processing
	Gain adjustment range	0.3 to 3.2 mV/V Rough adjustment: Digitally controlled by rough adjustment circuit Fine adjustment: Automatic adjustment by digital processing
	Minimum input sensitivity	0.3 µV/count
	Accuracy	Non-linearity: Within 0.01% FS Zero drift: Within 0.2 µV/°C RTI Gain drift: Within 15 ppm/°C
	Analog filter	Bessel type low-pass filter (-12 dB/oct.) Selectable from 2, 4, 6, 8 Hz
Display	A/D converter	Speed: 200 times/sec. Resolution: 24 bit (binary)
	Display unit	Numerical display of 10.4 mm character height via vacuum fluorescent display (7 digits) Sub display: 4.0 mm Character height
	Measured value	5 digits; Signs: Minus sign on most significant digit
	Unit	Selectable from t, kg, g, N, lb, none
External signal	Status display	SP1, SP2, SP3, near zero, Hold, zero alarm, stable, tare, net, zero, battery low indicator
	External output signal (12)	Near zero/ SP1/ SP2/ SP3/ under/ over/ HI/ LO/ stable/ weight alarm or error/ GO or complete/ RUN or accumulation error Transistor open collector output (Emitter = COM terminal) Output is set to LO when transistor is ON V _{ceo} = 30 V (max), I _c = 120 mA (max)
	External input signal (8)	Gross or Net/ digital zero/ tare/ tare reset/ hold/ judge/ feed or discharge/ start/ stop/ accumulation command/ accumulation clear* *: Signals are selectable. Up to 4 points can be selected. Set to ON when shorted to COM terminal through contact point (relay, switch etc.) or non-contact point (transistor, open collector output such as TTL etc.) I _c = 10 mA or lower
Interface	- SIF:	2-wire type serial interface
	- 232:	RS-232C communication interface
General specifications	- BCD:	BCD parallel data output interface (Option)
	- 485:	RS-485 communication interface (Option)
	- DAC:	D/A converter interface (Option)
	- CCL:	CC-Link interface (Option)
		Only one option can be installed.
General specifications	Power supply voltage	AC 100 to 240 V (+10%-15%) (Free power source at 50/60 Hz)
	Power consumption	11 VA typ.
	Operation condition	Temperature: Operation temperature range: -10 to +40°C Storage temperature range: -20 to +85°C Humidity: 85% RH or less (non-condensing)
	External dimension	144(W) × 72(H) × 160(D) mm (not including protrusions)
Attachments	Weight	Approx. 1.0 kg
	AC input cord (3 m) (nominal rating 125 V)...	1 BCD output connector..... 1 Mini driver..... 1 (when BCD output option is selected) FCN series I/O connector (with cover)..... 1 RS-485 connector..... 1 Jumper wire..... 2 (when RS-485 option is selected) Operation manual..... 1 D/A converter connector..... 1 Loadcell input connector terminal block..... 1 (When D/A converter option is selected) (Already mounted on the main unit) CC-Link connector..... 1 (When CC-Link option is selected)
Optional accessories	CA325AC3P-B3:	AC input cord 3 m
	CA325AC3P-CEE7/7B2:	AC input cord (voltage resistance: 250 V) 2 m
	CN34:	D-sub 9 p connector for RS-232C
	CN50:	FCN series I/O connector (with cover)
	CN55:	FCN series I/O connector (with diagonal cover)
	CN70:	D/A converter connector
	CN71:	RS-485-CC-Link connector
	CN72:	Double row connector for CC-Link
F720 fixing panel:	LB01-XH:	Loadcell input connector terminal block (Same accessory as the attached one)
		F252/F280 → Fixing panel for conversion of F701-C
		Lithium battery (with XH connector)

* Please note that there are possibilities of individual differences in a color tone on display devices such as LEDs, fluorescent display tubes and LCDs due to manufacturing process or production lots.

Structure of product code

F701-C □
① ②

① Standard unit

② Interface

Sign	Interface
Standard	SI/F, RS-232C

↓ One optional interface can be added in addition to the standard interface.

BCO	BCD output (Sink type)
485	RS-485
DAC	D/A converter (Current)
CCL	CC-Link